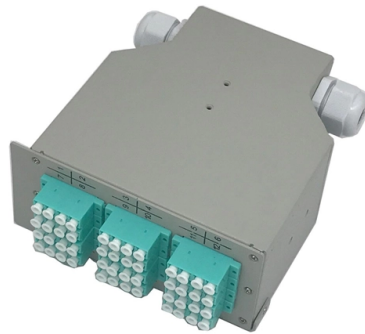


# What are the wavelengths of Huawei optical modules



## Overview

Wavelength: 1310nm, which is suitable for long distance transmission and is less affected by dispersion compared to shorter wavelengths. Distance: Supports transmission up to 1.4km (1400 meters) over single mode fiber, making it ideal for short to medium range network connections. The client ports in the module include a mix of 100 Gbps, 400 Gbps, and 800 Gbps. These muxponders are. Huawei has started shipping its next-generation high-performance coherent DSP in the first quarter of 2026 as an embedded assembly in a muxponder with two ports of 2. When used with multimode optical fiber (LC/PC-LC/PC OM2), the transmission distance can reach up to 550 m, the transmission. The optical module serves as a crucial component in optical fiber communication systems, operating at the physical layer, which is the lowest layer in the OSI model. Its primary function is to achieve optoelectronic conversion by converting electrical signals into optical signals and vice versa. Here are the key specifications and characteristics: Basic Information: Manufacturer: Huawei Part Number: 34060713 Interface Type: SFP+ (Small Form factor Pluggable Plus).



## Article Content

Huawei 02313URF Datasheet

Huawei 02313URF Datasheet Huawei 02313URF SFP-GE-LX-SM1310 Optical Transceiver, eSFP, GE, Single-mode Module (1310nm, 10km, LC)

Optical Transceivers Global Market Report 2023: Growing Adoption of ...

The growth of this market is attributed to the factors such as the growing adoption of optical modules among data centers and the rising need for optical transceivers for extended

Huawei, SFP+, 1310nm, 9.8G, -8.2dBm~+0.5dBm, -10.3dBm, LC,

Wavelength: 1310nm, which is suitable for long distance transmission and is less affected by dispersion compared to shorter wavelengths. Distance: Supports transmission up to 1.4km (1400 meters) over

Huawei GPON Optical Module

PON modules are the core of the PON boards, different modules have different optical power and receiver sensitivity, GPON module B+ C+ and

Understanding Optical Modules

Wavelength division multiplexing modules differ from other optical modules in center wavelengths. A common optical module has a center wavelength of 850 nm, 1310 nm, or 1550 nm, whereas a

The Most Comprehensive Guide Of Optical Modules

Explore the ultimate guide to optical modules. Learn types, functions, performance metrics & how to choose the right module for your fiber

Huawei Shipping Advanced 2 Tbps-Capable Coherent Wavelengths

And of course, Huawei's new module delivers wavelengths across the entire Super C-band and Super L-band, which is increasingly important as wavelength channels get wider.

What does an optical module do?

An optical module, often referred to as a transceiver, is a critical component in modern networking and telecommunications systems. Its primary function is to facilitate the transmission and reception of

400G Optical Modules 2026 Guide: DR4 vs. FR4 vs. LR8 Lab

400G FR4 delivers ~40% better fiber utilization in campus backbones LPO-compatible modules reduce power consumption by ~2.5W per port For 2026 deployments, prioritizing LPO

## Huawei LX Compatible SFP Modules: Strategic Inventory Guide

The Huawei LX standard is built upon the IEEE 802.3z (1000BASE-LX) protocol, which defines the physical layer requirements for Gigabit Ethernet over fiber. These modules operate at a 1310nm

## Huawei QSFP-DD-400G-SR4 400G Optical Transceiver Module

The Huawei QSFP-DD-400G-SR4 is a high-performance, hot-pluggable optical transceiver designed for 400 Gigabit Ethernet links over multi-mode fiber (MMF). Utilizing the QSFP-DD (Quad Small Form

## OM5270S-D2SW Huawei compatible XGSPON

It has minimum guaranteed optical budget of 34dB for XGPON and 35dB for GPON technology, with in most cases is enough to reach 20km distance.

## 2 Tbps DWDM momentum builds as Huawei moves into early

This is what we learned. Huawei has started shipping its next-generation high-performance coherent DSP in the first quarter of 2026 as an embedded assembly in a muxponder with two ports

## 10GE SFP+ Optical Modules

OMXD30000 OSX010000 OSX040N01 OSXD22N00 SFP-10G-BXD1 SFP-10G-BXU1 SFP-10G-ER-1310 SFP-10G-ER-SM1270-BIDI SFP-10G-ER-SM1330-BIDI SFP-10G-LR-I SFP-10G-USR SFP-10G

## What Is an SFP Module? — Complete Guide to SFP, SFP+ & SFP28

Core Functions of an SFP Module SFP modules perform three primary functions in a network: Electrical-to-optical or optical-to-electrical conversion For optical modules, the SFP contains

## Optical Fiber

When using optical modules and optical fibers, pay attention to the following to ensure proper communication between devices: Use single-mode and multi-mode optical fibers as required. Tx

## Optical Module Solutions for Huawei S5700/S5720 Series Switches

When using switches, we may encounter many confusions, such as what types of optical modules are needed for different models of Huawei switches, and how to resolve issues encountered

## Optical Transceiver Market Insights and Growth Report

A single-mode fiber transceiver is a self-contained optical transceiver module that can receive and send data over single-mode optical fiber cables that enable

## SFP+ Module Growth Opportunities and Market Forecast 2026-2034:

The SFP+ Module market is projected to reach \$5.35 billion by 2034, driven by Ethernet Switches & Routers. Analyze 14% CAGR and key growth opportunities.

### 10 Gbit/s SFP+ Optical Modules

10 Gbit/s SFP+ optical modules apply to 10 GE optical ports. The wavelength can be 850 nm, 1310 nm, or 1550 nm, and the transmission distance ranges from 0.5 km (0.31 mi) to 80 km (49.71 mi).

### Huawei eSFP-GE-SX-MM850 Gigabit Optical Module Overview

The eSFP-GE-SX-MM850 optical module is a Huawei Gigabit multimode optical module with DOM/DDM support, which is packaged in an SFP package with a center wavelength of 850 nm.

### Pluggable Optical Module Market Research Report 2034

Pluggable Optical Module Market Outlook 2025-2034 The global pluggable optical module market was valued at \$9.8 billion in 2025 and is projected to reach \$26.4 billion by 2034, expanding at a

### Optical Modules for Huawei S Series Switches

A switch must use optical or copper modules that have been certified for use on Huawei switches. Non-certified optical or copper modules cannot ensure transmission reliability and may affect service

### What is a Tunable DWDM Optical Module? What is its function?

What makes them so special? Traditional DWDM optical modules employ a "fixed wavelength" design, meaning each module can only transmit one specific ITU-T standard wavelength. This implies that a

### 100Gbps QSFP28 Optical Modules

QSFP-100G-CWDM4 QSFP28-100G-LR4 QSFP28-100G-SR4 QSFP-100G-4WDM-40  
QSFP-100G-CWDM4-ISP QSFP-100G-CWDM4-Lite QSFP-100G-ER4 QSFP-100G-SWDM4  
QSFP28-100G-1310

### 50G PAM4 Technical White Paper

The optical module with a transmission rate of 50 Gbit/s on a single wavelength supports 50GE, 200GE, and 400GE interfaces. The following table lists the parameters for the 50G, 200GE, and 400GE

### The Ultimate Guide to SFP Modules (2026): Types,

Confused by SFP vs SFP+? Read the definitive 2026 guide on SFP modules. We explain Single Mode vs Multimode, DDM diagnostics, and how to choose the

## Contact Us

For more information, pricing, or custom solutions, please contact us:

Website: <https://www.saastisfy.fr>

Email: [sales@saastisfy.fr](mailto:sales@saastisfy.fr)

Phone: +33 6 52 81 47 39

Address: 75 Rue de Rivoli, 75001 Paris, France

This document is for informational purposes only. Specifications subject to change without notice.

