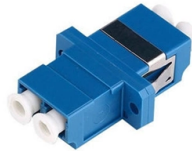


# Circuit Distribution Box 162



## Overview

The RubberBox RUBSSP162 is a simple and practical splitter built to turn a single 16A feed into two protected outputs. Compact and easy to use, it's manufactured in the UK for fast, reliable distribution in smaller setups where extra sockets are needed. Spare part sold by Schneebichler (including those manufactured by Schneebichler as indicated), are, as indicated above, compatible with products that could be of Rolfo®, Kässbohrer® or Lohr® brands. Housed in our IP-rated, impact-resistant. Gesamtleistung: 11040 W Max. Nennstrom/Kanal: 16 A welcome to taobao purchase hpk-5 circuit breaker panel cover, circuit breaker c45 box cover, size 162 \*. 19% VAT Prices in retail stores may vary. Almost indestructible: Even if these power split boxes fell down a trussing of four meters height, they would still work and not be damaged. Stay Updated with the Latest Lighting Trends & Insights! This cookie is set by GDPR Cookie Consent plugin.



## Article Content

distribution box | 100-162 | Schneebichler ATP GmbH

Article Reference 100-162 compatible with LOHR F00196283 | f00196283 compatible with Aspöck 76-1006-01 | 76100601 compatible with LOHR F00226116 | f00226116 manufacturer Aspöck installation

How to Choose a House Distribution Box | CHINT global

An optimal distribution box configuration ensures efficient power management and safety. The recommended configuration is: 1 Main Switch:

Understanding Distribution Boxes:A Comprehensive

A distribution boxes is an essential device that manages the safe and efficient flow of electrical power throughout different areas of a building or

How to Read and Interpret Your Distribution Box Labels

Understand your distribution box labels to identify circuits, improve safety, and troubleshoot electrical issues in your home with confidence.

4 Cabinets, distribution boxes

To be used on private premises or in offices and designed for installation of modular equipment, e.g. modular circuit breakers, residual-current devices, differential breakers, timers, lighting control units,

Size configuration of multiple circuit breakers in the

Choose the right size and setup for multiple circuit breakers in your distribution box to ensure safety, code compliance, and room for future upgrades.

A Step-by-Step Guide to Wiring an Electrical Panel Box

The panel box contains a series of circuit breakers or fuses that control the distribution of electrical energy to individual circuits throughout the building. The

Distribution Board Wiring Guide | Consumer Unit Layout

A distribution board (commonly called a consumer unit in domestic installations) is the central point where the incoming electrical supply is split into individual circuits that serve different

The Ultimate Guide to Distribution Box Types

In any electrical system, the distribution box is the heart and brain, a critical component that safely manages and distributes power from the main source to

Understanding Circuit Breaker Wiring Configurations in

Messy distribution boxes are dangerous and very hard to fix. This guide shows you how to organize circuit breaker wiring properly. You will learn to build a safe,

### Understanding Distribution Boxes: A Comprehensive

Learn what a distribution box is, its types, and how to choose the right one for your project. Includes clear examples and expert tips.

### Final Power Distribution Boxes | Product Catalog | CHINT Global

It ensures reliable power distribution by directing electricity to individual circuits and safeguarding them against overloads, short circuits, and other electrical faults.

### How to Choose a House Distribution Box | CHINT global

A well-chosen distribution box ensures the safety and efficiency of your household electrical system. This article guides you through selecting a

### EUROLITE SAB-162 Power Split Box | Steinigke Onlineshop

Almost indestructible: Even if these power split boxes fell down a trussing of four meters height, they would still work and not be damaged. Absolute multifunctional: This series is featured with all inputs

### Distribution board

A distribution board (also known as panelboard, circuit breaker panel, breaker panel, circuit breaker, electric panel, fuse box or DB box) is a component of an electricity supply system that divides an

### Explore Power Distribution Box Types and Functions

Power distribution boxes are used in commercial and residential buildings and are part of the electrical system, also known as switchboards.

### Electrical Control Panels & Distribution Boxes: Sizes,

Introduction Electrical control panels and distribution boxes are the backbone of modern electrical systems. From powering homes and industrial

### Rubber Box - RUBSSP162 - 16amp Power Distribution

Rubber Box - RUBSSP162 - 16amp Power Distribution Box Rubber Box SKU: RUBSSP162 Categories: 16A Power Distro, Infrastructure, Power Distribution,

### EUROLITE SAB-162 Stromverteiler

Accessories Powerdistributor / Splittboxen with 16A CEE Input Portable 16A CEE Distributor EUROLITE SAB-162 Stromverteiler - 18 %

### Distribution Boxes Types - The Complete Guide

The power distribution boxes deliver electricity from the main electrical main to other circuits. Several distribution boxes are designed for specific use in

Power Distribution Boards | 16A 32A 63A 125A | Single

With 16A, 32A, 63A, 125A, and Socapex input variants, along with 13A, 16A, 32A, and 63A output combinations, there's a rugged distro box to suit every

16a Power Distro Boxes | 63 Amp Splitter Boxes

Market leading suppliers of premium 16a power distro boxes. Rubber 16amp power distribution boxes in stock ready for delivery. Custom options available!

RUBSSP162

The RubberBox RUBSSP162 is a simple and practical splitter built to turn a single 16A feed into two protected outputs. Compact and easy to use, it's

Where Is the Distribution Box Located and How to Find It

When your power goes out or a circuit breaker trips, knowing exactly where your distribution box is located can save you time, money, and frustration.

Distribution Box and Selection Guide

Different settings have distinct electrical requirements: Residential: Homes typically require single-phase power and a Distribution Box with fewer

## Contact Us

For more information, pricing, or custom solutions, please contact us:

Website: <https://www.saastisfy.fr>

Email: [sales@saastisfy.fr](mailto:sales@saastisfy.fr)

Phone: +33 6 52 81 47 39

Address: 75 Rue de Rivoli, 75001 Paris, France

This document is for informational purposes only. Specifications subject to change without notice.

